



A Quarterly Publication of Alpha Phi Omega National Service Fraternity

WINTER 1984

## Convention '84

Over 1200 chapter delegates, alumni, Board Members, and guests are expected to come together in Washington, D.C. on December 28-30, 1984 for Alpha Phi Omega's biennial National Convention.

The Convention Committee has been hard at work since February to make this a memorable Alpha Phi Omega experience. Lorac Hintz, Nu Rho, College of William and Mary, is the Convention Chairman. She has been ably assisted by the following Chairmen and Vice Chairmen of the Convention Subcommittees: Entertainment — Joe Walker, Zeta Theta, Drexel University; Exhibits — Wendy P. Maylor, Zeta Beta, Virginia Tech; Floor Services — Jeff Palmer, Nu Rho, The College of William and Mary; Graphics — Sissy Thompson, Iota Mu, University of South Carolina; Hosting — Susan Summers, Mu Alpha, Georgetown University; Information — Lisa Fiorini, Epsilon Mu, University of Maryland; Printing and Publications — Annette Rahm, Alpha Chi, Massachusetts Institute of Technology, and Nick Gianaris, Kappa, Carnegie Mellon University; Publicity — Carolyn Croom, Sigma Upsilon, University of North Carolina at Charlotte; Public Relations — Ken Gilbert, Upsilon Nu, University of North Carolina at Wilmington; Registration — Linda Bacon, Theta, University of Virginia, and Mary Lynn Dworaczyk, Mu Omicron, Clarkson College; Sergeant-at-Arms — Sharon Morris, Iota Lambda, North Carolina State University, and Patricia L. Meyer, Lambda Omicron, West Virginia University; Service — Heidi Phillips, Delta Rho, Rutgers University, and Chris Sheehy, Mu Alpha, Georgetown University; Souvenirs — John Barrett, Alpha Alpha Upsilon, Mount Saint Mary's College; Wildlife Management — Steve Austin, Epsilon Zeta, Rensselaer Polytechnic Institute. Hal Hagemeier is the Convention Coordinator. Special Advisors to the Committee are Robert Harris, Board Liaison; Donald M. Larson, Professional Staff; Janet Lee, Local Resource; and Gerald A. Schroeder, Convention Advisor. Other Advisors included Chuck Bowen, Lorin A. Jurvis, Larry Kaufman, Timothy Mangano, and Richard Shullaw.

Proposals to amend the National By-Laws were mailed to all chapters in early November. Only legislative proposals submitted to the National Office by October 29, 1984 may be considered by the delegates. These proposals have been referred to the appropriate Convention Reference Committees. Reference Committees will also consider the reports of the Standing and Special Committees of the Board and resolutions related to the subject area. Every member in attendance will have the opportunity to address the issues before the Reference Committees during Committee sessions. These Committees will



then present their recommendations, based upon the views presented to them, in the Legislative Session. The Leadership Development Committee will offer the Leadership Development Workshop, as well as personal improvement seminars and a series of workshops designed to enable chapters to function more effectively and operate more efficiently. Topics will include: Chapter Operations, Membership Programming, Image and Public Relations, Financial Management, Extension and Reactivation, Hosting a Conference, Service Programs, Fund Raising, Service after Graduation, Communication, Public Speaking, Time Management, and a Career Day Seminar. The Leadership Development Workshop, which will be limited to 100 participants, offers a firm foundation in leadership. These sessions are invaluable to everyone who attends them.

The Nominating Committee will present nominations to the Convention for National President, National Vice President and five Board Members-at-Large, and the Convention will select those who will serve in these capacities for the next two years. The Time and Place Committee will recommend the site and dates of the next National Convention, which will be held in Little Rock, Arkansas or Houston, Texas, depending upon the decision of the delegates.

The ten regions will hold two meetings during the Convention. At the second meeting, Regions II, IV, VI, VIII, and X will each elect a Regional Representative to serve a four-year term and Region IX will elect a Regional Representative to fill the remaining two years of the unexpired term.

The last National Convention to be held in Washington, D.C. was in 1968 when a record attendance of 1,604 was set. The East Coast chapters promise great hospitality and are working hard to make this a memorable experience for you. The unique opportunities the Convention offers to share with others committed to the principles of Leadership, Friendship, and Service are not possible in any other setting. Those who serve on committees and take part in the seminars will be giving leadership to the Fraternity, but they will also be gaining experience to take back to their own campuses. It is fellowship in action, meeting members from across the nation, exchanging ideas, reinforcing ideals. Share your best ideas; take home some new ones.

Join us in Washington, D.C. as we form the fellowship circle to sing the Toast Song at the closing banquet. It's an occasion you will never forget.

**Alpha Phi Omega  
National Service Fraternity**

**Volume 60, No. 2  
Winter 1984**

**National Officers**

Earle M. Herbert, Los Angeles, CA  
National President  
Berkeley P. Duncan, Ann Arbor, MI  
National Vice President

**Members-at-Large**

Dr. Stan Carpenter, College Station, TX  
Abe Frishman, Carrollton, TX  
Fred Pollack, Port Washington, NY  
Jerry Schroeder, McLean, VA  
Michael W. Suhr, Minneapolis, MN

**Regional Representatives**

I. Tim Mangan, Chelmsford, MA  
II. Warren C. Weidman, Reading, PA  
III. Robert J. Harris, Raleigh, NC  
IV. Wendell Wainwright, Memphis, TN  
V. William B. Rugh, Waterville, OH  
VI. Roger Elliott, Pontiac, MI  
VII. Wilfred Krenek, Houston, TX  
VIII. Joseph Morrone, Tulsa, OK  
IX. Robert J. Satterstrom, Minneapolis, MN  
X. John R. Trunick III, San Diego, CA

**National Executive Director**

Darrell D. Spoon, Kansas City, MO

**Legal Counsel**

Alex M. Lewandowski, J.D., LL.M., Kansas City, MO

**Past Presidents**

E. Ross Forman, Philadelphia, PA  
Tom T. Galt, M.D., Spartanburg, SC  
Lawrence L. Hirsch, M.D., Chicago, IL  
Lorin A. Jurvis, Washington, DC  
Dr. Glen T. Nygreen, Bronx, NY  
William S. Roth, Birmingham, AL  
Dr. Lester R. Steig, Palo Alto, CA  
Lucius E. Young, LTC, Ret., Washington, DC  
Dr. C. P. Zlatkovich, Bryan, TX

**Life Members**

George F. Cahill, Pittsburgh, PA  
Irwin H. Gerst, Palos Verdes Peninsula, CA  
Sidney B. North, Lee's Summit, MO  
Dr. Harold F. Pote, LaJolla, CA  
Joseph Scanlon, Kansas City, MO  
Roger A. Sherwood, Kansas City, MO  
A.G. Spizzirri, Louisville, KY

**Founding Life Members**

Ellsworth S. Dobson, Collbran, CO  
Herbert Heinrich, Honolulu, HI  
Donald L. Terwilliger, Englewood, FL  
William T. Wood, Hockessin, DE

**Ex-Officio Members**

Edward C. Jouljian III, Oklahoma City, OK  
James L. Tarr, Dallas, TX

**Editor, Torch & Trefoil**

Judith A. Mitchell

TORCH AND TREFOIL (USPS 633-960) is issued regularly four times a year, September, November, February and April, by Alpha Phi Omega, 1100 Waltower Building, 823 Walnut Street, Kansas City, Missouri 64106. Printed by Rosse Lithographing, Kansas City, Missouri. Second Class Postage paid at Kansas City, Missouri. Subscription price \$1.50 per year. POSTMASTER: Send address changes to Alpha Phi Omega, 1100 Waltower Building, 823 Walnut, Kansas City, Missouri 64106.

# You Are The Future

You are probably reading this either just before or during our 1984 National Convention in Washington, D.C. If so, you have a truly unique opportunity to personally have an effect on the future of Alpha Phi Omega. You can accomplish this by attending and actively participating in this Convention.

Alpha Phi Omega remains one of the few national college organizations which is controlled by its student members. Don't fail to take advantage of your opportunities. Have you thought about the issues? Have you made up your mind, or has your chapter decided how it wants its delegates to vote? How much should our national fees be, or should precise figures be mentioned in our By-Laws? What type of an organization should we be? Does it make any difference what we are called, or is what we do more important than our name? What should we emphasize in our programs over the next two years? Who should lead us on our Board of Directors, and how much authority over us (and within their own deliberations) should they have? Are there any circumstances which make it possible to remove a Brother from our Fraternity; and, if so, what are they?

These are important questions, not to be answered lightly, for the answers they receive will affect the future of Alpha Phi Omega. In answering these questions, and all of the others which arise during a Convention, each of you present at the Convention has a specific role to play, a role vital to the future of our Fraternity. The role of a voting delegate is fairly well outlined: attend committee meetings, represent your chapter on the floor, cast your appropriate vote.

The non-voting delegate's role is less well-defined, but just as important. You, too, represent your chapter, and you, too, attend committee meetings. But here the responsibilities change. You can be places where your voting delegate can't be, listening to opinions she/he can't hear, or gathering information. And you can pass this information on to your members so that your chapter is as informed as possible. You can improve your own leadership skills and your abilities to be a more responsible active member of your chapter. You have much more freedom in what you choose to do or choose not to do.

Each of you can enjoy yourself, of course. And you should! You will probably never forget this highlight of your Alpha Phi Omega experience. The fellowship, the brotherhood you share in Washington will rarely, if ever, be topped. Enjoy, learn, experience, listen, think, react, decide. The decisions which you personally make during these three eventful days can decisively affect the future of Alpha Phi Omega. Do what is best for Alpha Phi Omega and all of us will have been well-served.

For these three days, as always, you have control of our future. And, as always, it's in good hands.

Earle M. Herbert  
National President

## Moving?

Mail to: 1100 Waltower Bldg.  
823 Walnut Street  
Kansas City, MO 64106

If you're moving, please let us know five weeks before changing your address. Place magazine address label here, print your new address below.

### NEW ADDRESS

Name \_\_\_\_\_

Address \_\_\_\_\_

City, State, Zip \_\_\_\_\_

# Membership Committee Plans APO Growth

*Jerry Schroeder, Membership & Extension Chairman*

Did you know that Alpha Phi Omega has had chapters on over 600 campuses across the country? That statistic means that our Service Fraternity is the largest Greek letter organization in the world. But, as usual, statistics can be deceiving. Today, APO has over 300 active chapters, which means that we have on our books nearly 275 inactive chapters that have ceased to exist for a variety of reasons. During the early 1970's, the Fraternity lost a significant number of chapters due to student disinterest and the social unrest of that time. Last year alone, 25 chapters were declared inactive, a few for failure to pay annual active dues, but most because they simply drifted out of existence. More disturbing is the fact that far too many of the chapters that have gone inactive in the last five years have been recently chartered new chapters.

The Membership and Extension Committee has examined all of these statistics and has decided to implement a new program and alter an old one to turn these numbers around. First, a coordinated extension effort will be initiated seeking to establish interest groups on campuses where APO does not now exist. Second, the chapter chartering process will be revised to better train and prepare interest groups for active membership in the Fraternity.

The extension effort is a comprehensive program that has been devised by Brother Don Wauthier of Region VI for targeting various campuses for chartering projects. In its first stage, which is to be implemented this semester, campuses to be targeted consist of all four year, full time academic institutions where APO has previously existed and all other four year schools with a full time enrollment of 4,000 or more students. While petitioning groups will continue to be encouraged on all campuses, the first stage of this target program will be limited to schools meeting these criteria. As the program develops in subsequent years, other categories of schools will be included.

Approximately 400 campuses are in this first phase of the program. The Committee is now identifying chapters in reasonable proximity to these campuses that might be willing to "sprout a new chapter" as a service project. Where there is no nearby or willing chapter, active alumni in the area, as well as Deans of Students, will be contacted to enlist support in identifying and supporting "core" interest groups of students. Of course, as is always the case, the concerted efforts of the sectional alumni volunteers will be absolutely essential to provide effective support to what is hoped will be a primarily undergraduate extension effort. Finally, there will obviously be a number of active chapters that will not be directly requested to assist in the first phase of this program because of geographic or demographic considerations. Nevertheless, every chapter should consider an extension effort as part of its service program; we will vigorously support any and all extension efforts.

The second aspect of the Membership Committee's response to the "inactive chapter" phenomenon involves a revision of new charter requirements to reduce, or hopefully eliminate, the all-too-often demise of newly chartered chapters. The new chapters that we charter should be stronger and better prepared to face the rigors of maintaining effective membership, leadership, and service programs. This part of the Committee's plan is not quite ready for implementation because of the necessity to seek comments, criticisms, and suggestions from the Regional Representatives and certain Sectional Chairmen. However, it is fair to say that the thrust of this revision, which is being developed by Brother Mary Anne Robbett of Region I, centers on four areas: (1) increased involvement of the school administration in the chartering process to include a "partnership" agreement similar to that used by the Scouts, and a better understanding of APO's uniqueness by the school administration; (2) minimum period of time (one year?) during which a group must plan and execute programs for membership recruitment and training, service, and leadership before a petition will be approved; (3) increased training by alumni volunteers including mandatory completion of a program planning conference, and attendance by the petitioning group at a Sectional, Regional, or National Convention; and (4) a "test" to be completed by the group to ensure a complete understanding of the principles of Alpha Phi Omega.

Obviously, these changes will result in more formal requirements that must be completed by a petitioning group prior to being chartered. Such changes are necessary, however, if the Fraternity wishes to be certain that its newest chapters are familiar with APO as a national organization, can survive to the post-chartering "letdown," and are capable of working with the school to establish viable ongoing programs. Too often in the past the entire focus of a group is on obtaining the charter to the detriment of other more long-lasting goals and, once the new chapter is chartered, no one knows what to do next or how to do it — particularly after the leader of the petitioning group graduates. Any suggestions concerning the revision of the chartering process are welcome and should be forwarded to the National Membership and Extension Chairman in care of the National Office.

With everyone's help and dedication, both of these efforts should combine to provide Alpha Phi Omega with a sustained and quality growth where it really matters — our chapters.

## Executive Director Search

A Search Committee has been formed to select a new Alpha Phi Omega Executive Director. Requirements include communications skills, management capabilities, fund raising abilities, and a commitment to the principles of the Fraternity.

Resumes should be sent at the earliest possible date to:

Search Committee  
Alpha Phi Omega  
1100 Waltower Building  
Kansas City, Missouri 64106

# Financial Report Fiscal 1984

Mike Suhr

Finance Chairman

Our Fraternity experienced successful financial results for the 1983/84 fiscal year, which ended August 31, 1984. Total revenues were \$240,684, which exceeded the budgeted \$208,300 by \$32,384 or 15.5%. All membership categories reflect modest increases, whereas the Sale of Jewelry and Supplies, along with contributions to the Development Campaign, posted significant gains.

We exceeded our \$208,300 budget for expenses by \$17,707 or 8.5%. This was primarily due to an extraordinary printing expense and personnel costs related to organizational changes.

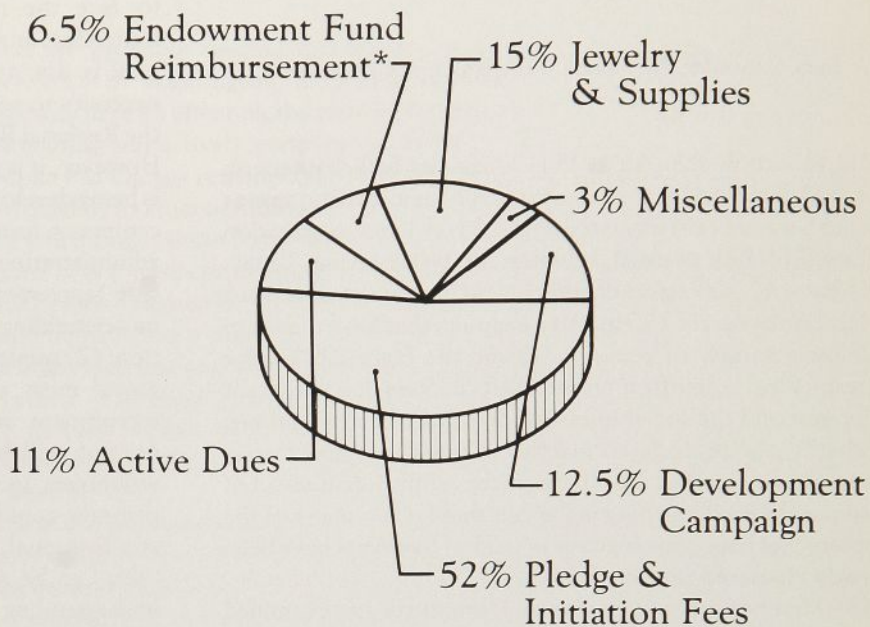
The bottom line reports a \$14,677 excess of revenues over expenses.

I am encouraged with the audit and the accompanying financial statement by Coopers and Lybrand, a certified public accounting firm retained by Alpha Phi Omega. The Balance Sheet as exhibited, indicates financial growth with our assets and fund equity double of that reported two years ago. This favorable position provides us with cash reserves and liquidity which will assist the Fraternity with capital expenditure funding.

We place a heavy reliance on our chapters for their membership fees and dues to accomplish continued financial growth for the Fraternity. It was the mandate of the 1982 National Convention that we strive for alternative funding methods to reduce this reliance. I am pleased to report that we made progress and that the chapters provided 63% of revenues this past year as compared to 70% two years ago. Together, we must continue to develop and implement means for revenue expansion and diversification.

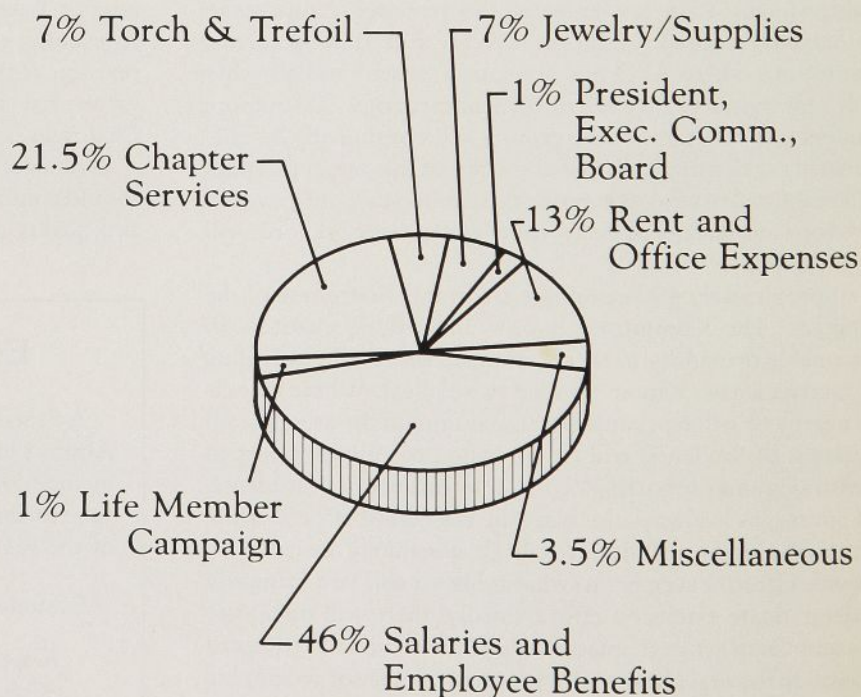
We are grateful that Alpha Phi Omega continues to maintain financial growth and thank our chapters for their commitment to this growth by providing effective chapter programs, including prompt membership reporting. That, coupled with increased contributions by our alumni and friends, positions us for continued financial success. It is with pleasure that I commend our national leaders, including Ron Kite, Clark Israel, Wilfred Krenek and Roger Sherwood, who comprise the National Finance Committee. They, along with our National Headquarters office staff, have provided valued assistance in maintaining our financial affairs. Together, we have enjoyed a rewarding fiscal year and provided fiscal management for continued success of Alpha Phi Omega.

## REVENUES



\*Covers expenses incurred for the Endowment Fund during the year.

## EXPENSES



ALPHA PHI OMEGA  
COMPARATIVE BALANCE SHEETS  
August 31, 1984, 1983 and 1982

ASSETS	1984	1983	1982	LIABILITIES AND FUND EQUITY	1984	1983	1982
<b>General Fund:</b>				<b>General Fund:</b>			
Cash and money market funds	\$45,016	\$32,460	\$17,776	Payable to local chapters	\$ 5,789	\$ 6,738	\$ 5,707
Accounts receivable	4,612	6,201	3,446	Accrued payroll, payroll taxes and salary deductions	1,464	1,774	1,454
Inventories: Merchandise for sale, at the lower of cost (first-in, first-out) or market	\$14,063	\$12,417	\$ 9,686	Accounts payable	3,886	2,111	1,394
Printed materials and supplies, at cost (not intended to be sold)	16,349	16,136	12,932	Note payable - copier	6,689	-	-
Furniture and equipment	42,366	33,673	27,802	<b>Total liabilities</b>	<b>17,828</b>	<b>10,623</b>	<b>8,555</b>
Less accumulated depreciation	25,534	22,901	20,410	<b>Fund equity:</b>			
Other assets	2,451	-	-	<b>Fund balance:</b>			
<b>Total assets of General Fund</b>	<b>\$99,323</b>	<b>\$77,986</b>	<b>\$51,232</b>	Designated by the Board of Directors for:			
Development Campaign Fund:				Update of membership files			
Cash	\$ 628	\$12,707	\$12,102	Purchase of copier			
Special Project Fund:				Furniture and equipment replacement			
Cash	\$ 4,679	\$ 2,707	\$ 2,375	Undesignated			
				4,231	4,231	-	-
				61,706	47,029	41,034	41,034
				79,937	65,260	65,260	65,260
				1,558	2,103	1,643	1,643
				<b>Total fund equity</b>			
				81,495	67,363	42,677	42,677
				<b>Total liabilities and fund equity of General Fund</b>			
				<b>\$99,323</b>	<b>\$77,986</b>	<b>\$51,232</b>	<b>\$51,232</b>
				<b>Development Campaign Fund:</b>			
				Fund balance			
				\$ 628	\$12,707	\$12,102	\$12,102
				<b>Special Project Fund:</b>			
				Fund balance			
				\$ 4,679	\$ 2,707	\$ 2,375	\$ 2,375

GENERAL FUND  
STATEMENT OF REVENUE, EXPENSES AND CHANGES IN FUND BALANCE  
for the year ended August 31, 1984

	Actual	Budget	Actual Over (Under) Budget
<b>Revenues and transfers in:</b>			
Revenue:			
Initiation fees	\$ 94,866	\$ 87,000	\$ 7,866
Pledge fees	30,224	26,000	2,224
Annual active membership dues	26,799	26,000	799
Royalties	530	1,500	(970)
Sale of jewelry and supplies	36,190	25,000	11,190
Endowment Fund reimbursement for (Note 2):			
Life Member Services	14,337	14,000	337
Life Membership Sales Campaigns	1,367	2,000	(633)
Charter fees	350	350	-
Interest	3,959	1,750	2,209
Group insurance program	1,020	1,000	20
Miscellaneous income	749	200	549
<b>Total revenues</b>	<b>210,391</b>	<b>186,800</b>	<b>23,591</b>
Transfers in:			
Development Campaign Fund	30,293	21,500	8,793
<b>Total revenues and transfers in</b>	<b>240,684</b>	<b>208,300</b>	<b>32,384</b>
<b>Expenses:</b>			
Salaries and Directors	79,181	86,310	(7,129)
Retirement	2,043	2,795	(752)
Hospitalization insurance	6,118	4,585	1,533
Unemployment compensation	2,730	-	2,730
Payroll taxes	5,631	6,045	(414)
Disability insurance	568	565	3
Severance pay	6,450	-	6,450
Search Committee	6,019	-	6,019
Moving expense	793	-	793
Printing	16,163	10,000	6,163
Telephone	7,839	6,000	1,839
Postage	10,677	12,000	(1,323)
Rent and utilities	11,149	11,800	(651)
Auditing and accounting	1,814	1,500	314
Office supplies	4,551	6,000	(1,449)
Data processing	3,454	3,300	154
Equipment maintenance	4,277	4,500	(223)
Insurance	2,176	2,200	(24)
Chapter visitation, staff	9,222	8,000	1,222
Torch and Trefoll	16,558	15,400	1,158
Certificates, charters and awards	853	2,000	(1,147)
Alumni report	306	1,000	(694)
President, Executive Committee and Directors	1,995	1,500	495
Professional fees and subscriptions	434	500	(66)
Purchase of jewelry and supplies	15,764	15,000	764
Bad debts	1,459	-	1,459
Life Membership Sales Campaign	1,367	2,000	(633)
Miscellaneous expenses	786	300	486
Depreciation	4,929	5,000	(71)
Loss on equipment retirement	701	-	701
<b>Total expenses</b>	<b>226,007</b>	<b>208,300</b>	<b>17,707</b>
Excess of revenues and transfers in over expenses	14,677	-	\$14,677
Fund balance, September 1, 1983	65,260		
Fund balance, August 31, 1984	\$ 79,937		

ALPHA PHI OMEGA  
STATEMENT OF REVENUE, EXPENSES AND CHANGES IN FUND BALANCE  
FOR THE YEARS ENDED AUGUST 31, 1982-84

	1984 Actual	1983 Actual	1982 Actual
<b>REVENUE:</b>			
Initiation Fees	\$ 94,866	\$ 93,590	\$ 86,075
Pledge Fees	30,224	27,780	27,496
AAMD	26,799	27,753	23,983
Royalties	530	1,370	1,307
Sale of Jewelry & Supplies	36,190	28,312	21,947
Life Member Services	14,337	14,202	11,368
Life Member Sales Campaign	1,367	1,887	1,529
Charter Fees	350	245	350
Interest	3,959	3,066	696
Group Insurance Program	1,020	1,072	1,034
Development Campaign	30,293	22,330	16,470
Special Projects	-	-	5,301
Miscellaneous Income	749	1,602	369
	\$240,684	\$223,209	\$197,925
1982 Convention	NA	43,651	NA
<b>Total Revenues:</b>	<b>\$240,684</b>	<b>\$266,860</b>	<b>\$197,925</b>
ALPHA PHI OMEGA			
<b>EXPENSES:</b>			
Personnel Services	\$109,458	\$ 94,312	\$ 85,953
Office Services	62,175	61,307	55,368
Field Services	28,934	27,098	24,901
Other Services	25,440	24,726	17,715
Subtotal	\$226,007	\$207,443	\$183,937
1982 Convention	NA	35,191	NA
<b>Total Expenses</b>	<b>\$226,007</b>	<b>\$242,634</b>	<b>\$183,937</b>
Total Excess	14,677	24,226	13,988
Previous Fund Balance	65,260	41,034	27,046
New Fund Balance	79,937	65,260	41,034

# ACADEMIC VS. EXTRACURRICULAR INVOLVEMENT

MARIAN JENSEN  
ADVISOR, LAMBDA OMICRON

This semester, Lambda Omicron Chapter has instituted a new procedure which allows for the review of grade point averages of all active members and pledges. One of the special duties of the faculty advisor, as outlined by the National Advisor's Handbook, is to strongly encourage high scholastic standards. Therefore, a review of grades over the last semester is necessary to monitor the academic progress of members.

While scholarship is not a specific principle of Alpha Phi Omega, the academic success of the membership is important to the chapter's status as a student organization. Likewise, and more importantly, progress in academic pursuits is an important goal for each member. Much of the learning that takes place during college happens outside the classroom. Certainly, activity in APO promotes personal growth experiences which are just as meaningful as the cognitive learning that goes on in the classroom. Nevertheless, with minimum standards of achievement in the classroom, membership and activity in your chapter is negated.

There are times when you can lose sight of the balance between academic pursuits and extracurricular involvement. When involved in service to others, it can be possible to over-extend efforts to the detriment of academic activity. Over-estimation of your ability and/or the time necessary can

lead to neglect of studies. While interest and zeal in service projects is important, Alpha Phi Omega is not the primary purpose in attending your institution.

Over-extension in terms of time and activity is a problem that can be overcome by time management and better planning. Over-extension can happen in life after college (there is life after college) as well. Therefore, each of us as members must learn to budget time and responsibility carefully. Advisors are always available to discuss such matters with members.

If you find yourself confusing the purposes of being in school and being in Alpha Phi Omega, stop by and see an advisor. The most important thing you can do for Alpha Phi Omega, and yourself, is to have a clear view of what your own goals are. Those who excel as leaders and those who are able to give service to the community are those people who have planned well and know well their own goals and objectives in life. At the same time, all of us go through periods where those goals and objectives are not always as clear as we would like them to be. Don't hesitate to ask for assistance if you need it in the evaluation of your own goals and objectives.

In the meantime, if you find that your G.P.A. is not what you would like it to be, there are lots of brothers to help you. Just ask.

## National Endowment Fund Report

For Period July 1, '83 to June 30, '84

By Irwin H. Gerst, Chairman

The past fiscal year shows some very positive growth. As a result of a decision made in January 1983, we are better situated in quality investments than we have ever been before. Earnings and Life Membership income exceeded expenses by \$42,675. The Fund value is \$393,211, a 12% increase over June 30, 1983.

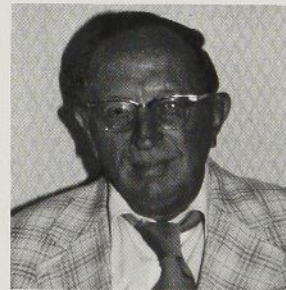
Your Trustees continue to promote the Endowment Fund and growth in Life Memberships. The Codicil Club is continuing proof of our alumni's commitment to Alpha Phi Omega.

We will continue to give careful and considerate attention to the management of your Endowment Fund and wish you all a very successful school year.

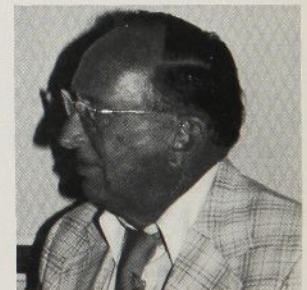
### Statement of Revenue, Expenses and Changes in Fund

Revenue	
Life Membership	\$ 8,151
Dividend & Interest Income	20,005
Realized gain in investments	25,923
Other income	<u>6,545</u>
Total Revenue	\$60,624
Expenses	
Life Membership Service	\$15,704
Management Service	<u>2,245</u>
Total Expenses	\$17,949
Excess revenue over expenses	\$ 42,675
Balance as of 6/30/83	<u>\$350,536</u>
Balance as of 6/30/84	\$393,211

## HE'S IN FOR LIFE!



00003



00003

### "SLY" SID NORTH

"Sly Sid" is a lifer. He's done plenty of time and he'll be doing plenty more. He started out with our "gang" as our Executive Secretary and now he's committed to a Life Membership on the National Board of Directors. He's got quite a record. Won't you start your record and get committed. ALPHA PHI OMEGA LIFE MEMBERSHIP: UNDERGRADUATE \$30/ALUMNI \$60. Contact the National Office.

## BE A LIFER!



## DELTA SIGMA UNIVERSITY OF CONNECTICUT

For the past three years, Delta Sigma Chapter at the University of Connecticut has held a Multiple Sclerosis Dance Marathon. The marathon was sponsored by the Connecticut River Valley Chapter of the M.S. Society. The marathon starts on a Friday at 8 p.m. and ends twenty-four hours later on Saturday at 8 p.m. The monotony of dancing is broken up at strategic times by events such as costume contests, musical chairs, clowns, jugglers, magicians, and break dancers. With forty couples entered in their last marathon, they raised over \$11,000. For more information write Chip Davis, Alpha Phi Omega, University of Connecticut, Box #U-8, Storrs, Connecticut 06268.

## ALPHA EPSILON LOUISIANA STATE UNIVERSITY

Each fall on the campus of Louisiana State University, Greek organizations hold a flag football marathon to raise money for the Muscular Dystrophy Association. With the support of other campus organizations, over \$25,000 was raised during the week-long fund raiser. Organizations participate by providing a donation to play flag football in different time slots around the clock. For the past five years, Alpha Epsilon Chapter has participated in this event. For more information contact Kathy Larson, Alpha Phi Omega, P.O. Box 19187, LSU, Baton Rouge, Louisiana 70893.

## ALPHA IOTA OHIO STATE UNIVERSITY

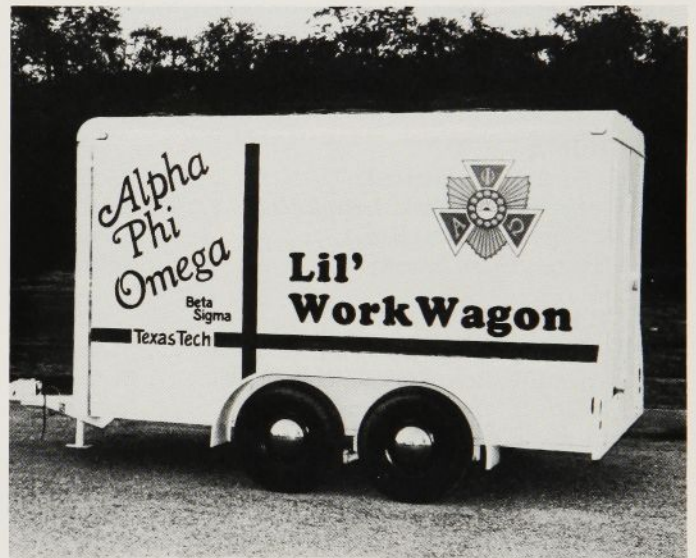
One of the pledge projects of Alpha Iota Chapter was to help install the new Sylva Designed Orienteering Course at BSA Camp Lazarus, north of Columbus, Ohio. Pictured below are Bill Hug and Lee Peters who served on the Camp Lazarus staff and who are in the October 1984 Issue of *Boy's Life*. For more information write Daniel Roberts, Alpha Phi Omega, Ohio State University, Box 81, Ohio Union, Columbus, Ohio 43210.

## UPSILON NU UNIVERSITY OF NORTH CAROLINA AT WILMINGTON

The Brothers of Upsilon Nu worked toward creating a mile of money during a recent project held in their university union. Students passing by their display donated loose change to be included in the mile of money. The coins donated were glued to cash register tape rolls and a running total was kept of the amount donated and the number of feet accumulated. For five days, over 30 Brothers contributed their time gluing money to tape rolls. By the end of the fifth day, local newspaper and television reporters reviewed their progress and publicized it to the community. Upsilon Nu didn't make a mile but did raise \$219 in just five days!

Upsilon Nu chose to donate the money to BIG BUDDY of New Hanover County. BIG BUDDY is a Family Service program that uses area residents to volunteer their time each month to underprivileged children. These Big Buddies serve as role models to the Little Buddies in order to promote good citizenship.

More information can be obtained by writing to Upsilon Nu Chapter at the University of North Carolina at Wilmington, University Union, 601 South College Road, Wilmington, NC 28403.



## BETA SIGMA TEXAS TECH UNIVERSITY

Faced with problems of storing and transporting an assortment of tools to its service projects, Beta Sigma Chapter of Alpha Phi Omega realized one of their longtime dreams when their new tool trailer was unveiled at the Chapter's Active Retreat.

The trailer was purchased with the chapter's trust fund at a cost of approximately \$3,000, and is twelve feet long, six feet wide and six feet high. With an overall white paint job and the Fraternity insignia emblazoned on the sides, the trailer was christened "The APO 'Lil Work Wagon.'" Inside, the trailer has shelves and specialized fixtures for holding down the tools when it is being moved. All of the chapter's shovels, hoes, rakes, paint rollers and brushes, as well as other tools, are stored in the trailer when not in use.

For more information write Ray Stevens, Alpha Phi Omega, Box 4333, Texas Tech University, Lubbock, Texas 79409.

---

# THANK YOU ...

## Sectional Chairmen

Being a Sectional Chairman is often a thankless job, but is considered the most important volunteer position in the Fraternity. It is the Sectional Chairman who is a counselor, leader, educator, and resource for the chapters in his or her section. It is the Sectional Chairman who ensures that the Chapters are in good standing with the National Fraternity. Often, the only thing they end up with is a large phone bill and an empty gas tank. To all of those who volunteer their time and money for the future of the Fraternity, WE SALUTE YOU!

### REGION I

Chuck Funk (New England) .....	Section 95
Ken Robbett (New York, Long Island) .....	Section 97
Juan R. Nieves (Puerto Rico) .....	Section 98
Steve Stamos (New Jersey) .....	Section 99

### REGION II

Kevin Webb (Eastern Upstate New York) ...	Section 88
Paul Haust (Western Upstate New York) ....	Section 89
Vance Hart, II (Central Pennsylvania) .....	Section 90
Margo Lane (Northeastern Pennsylvania) ....	Section 91
Gerry P. Van Trieste (Southeastern Pennsylvania, Delaware) .....	Section 92

### REGION III

Lyndal Butler (Central and Western North Carolina) .....	Section 79
Kenneth L. Hall (Eastern North Carolina) ...	Section 80
Steve Wilson (Virginia) .....	Section 82
Janet Lee (District of Columbia, Maryland) ...	Section 84

### REGION IV

Tim Thomason (Alabama) .....	Section 69
Ron Estes (Western Tennessee, Western Kentucky) .....	Section 70
Charles Mosley (Mississippi) .....	Section 71
John W. Wimberly (Georgia) .....	Section 72
Albert K. Taylor (Florida) .....	Section 74
Rudy Brown (South Carolina) .....	Section 77

### REGION V

John Anderson (Ohio) .....	Section 57
Roland Knicely (West Virginia) .....	Section 61
Rick Martin (Western Pennsylvania) .....	Section 63
Charles Smith (Eastern Kentucky) .....	Section 67

### REGION VI

Gregory Svoboda (Northern Illinois) .....	Section 48
Glenna Roach (Indiana) .....	Section 52
Bobby M. Hainline (Michigan) .....	Section 54

### REGION VII

Rick Diles (Western Texas, New Mexico) ....	Section 40
Miles Cato (North Central Texas) .....	Section 41
Charlie Montero (Eastern Texas) .....	Section 42
John Calvin Davis (Louisiana) .....	Section 45

### REGION VIII

Craig Pierce (Colorado, Wyoming) .....	Section 30
Craig Willeford (Oklahoma) .....	Section 32
Fred Heismeyer (Arkansas) .....	Section 33
Ron Kite (Kansas) .....	Section 34
Terry D. Burns (Western Missouri) .....	Section 35
Barb Sweeney (Eastern Missouri, Southwestern Illinois) .....	Section 49

### REGION X

Dave Emery (Southern California) .....	Section 1
James Murdoch (Arizona, Southern California) .....	Section 2
Andee Levy (Northern California, Nevada, Hawaii) .....	Section 4
Darrell Keck (Idaho Panhandle, Eastern Washington, Montana) .....	Section 7
Pat Hardre (Alaska, Oregon, Western Washington) .....	Section 8
Rulon D. Skinner (Southern Idaho, Utah) ...	Section 14